

# Hi-MO **X10** Guardian Anti-Glare

## LR7-54HVV 480~500M

- Suitable for glare-sensitive scenarios such as airports, highways, and residential households
- Use high-transparency and low-reflection glass to enhance the anti-glare effect
- Peak efficiency with top power generation performance
- TaiRay wafer & BC technology enhances high product reliability



15-year Warranty for  
Materials and Processing



30-year Warranty for Extra  
Linear Power Output

### Complete System and Product Certifications

IEC 61215, IEC 61730

ISO9001:2015: ISO Quality Management System

ISO14001: 2015: ISO Environment Management System

ISO45001: 2018: Occupational Health and Safety

IEC62941: Guideline for module design qualification and type approval

# LONGI



**24.5%**  
MAX MODULE  
EFFICIENCY

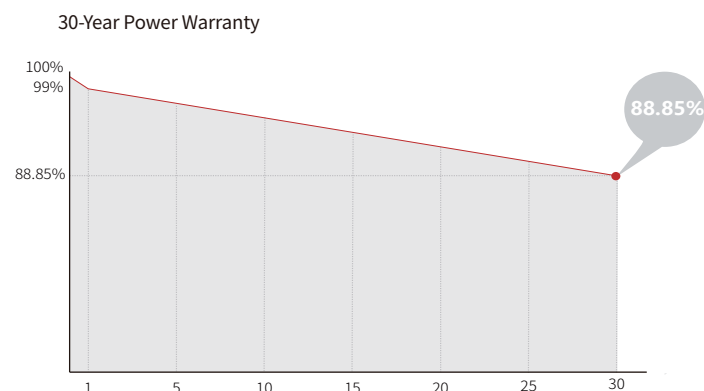
**0~3%**  
POWER  
TOLERANCE

**<1%**  
FIRST YEAR  
POWER DEGRADATION

**0.35%**  
YEAR 2-30  
POWER DEGRADATION

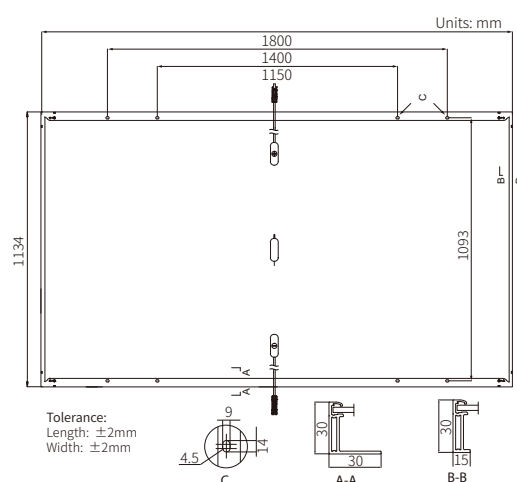
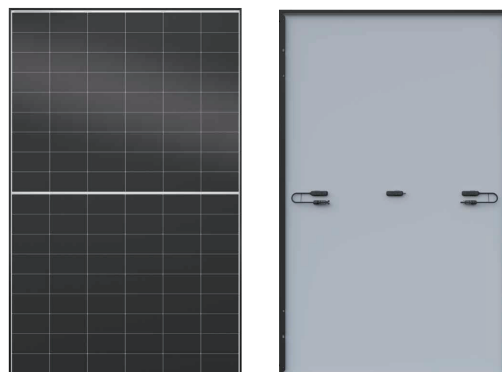
**BC-CELL**  
LOWER OPERATING  
TEMPERATURE

### Additional Value



### Mechanical Parameters

Cell Orientation	108 (6×18)
Junction Box	IP68, three diodes
Output Cable	4mm <sup>2</sup> , +400, -200mm/±1200mm length can be customized
Glass	Single glass, 3.2mm anti-glare coated tempered glass
Frame	Anodized aluminum alloy frame
Weight	21.6kg
Dimension	1800×1134×30mm
Packaging	36pcs per pallet / 216pcs per 20' GP / 864pcs per 40' HC



### Electrical Characteristics

 STC : AM1.5 1000W/m<sup>2</sup> 25°C

 NOCT : AM1.5 800W/m<sup>2</sup> 20°C 1m/s

 Test uncertainty for P<sub>max</sub>: ±3%

Module Type	LR7-54HVH-480M	LR7-54HVH-485M	LR7-54HVH-490M	LR7-54HVH-495M	LR7-54HVH-500M
Testing Condition	STC	STC	STC	STC	STC
Maximum Power (P <sub>max</sub> /W)	480	485	490	495	500
Open Circuit Voltage (V <sub>oc</sub> /V)	40.29	40.40	40.52	40.64	40.75
Short Circuit Current (I <sub>sc</sub> /A)	15.13	15.23	15.33	15.43	15.53
Voltage at Maximum Power (V <sub>mp</sub> /V)	33.28	33.40	33.51	33.62	33.73
Current at Maximum Power (I <sub>mp</sub> /A)	14.43	14.53	14.63	14.73	14.83
Module Efficiency(%)	23.5	23.8	24.0	24.3	24.5

### Operating Parameters

Operational Temperature	-40°C ~ +85°C
Power Output Tolerance	0 ~ 3%
Maximum System Voltage	DC1500V (IEC)
Maximum Series Fuse Rating	25A
Nominal Operating Cell Temperature	45±2°C
Protection Class	Class II
Fire Rating	IEC Class C

### Mechanical Loading

Front Side Maximum Static Loading	5400Pa
Rear Side Maximum Static Loading	2400Pa
Hailstone Test	25mm Hailstone at the speed of 23m/s

### Temperature Ratings (STC)

Temperature Coefficient of I <sub>sc</sub>	+0.050%/°C
Temperature Coefficient of V <sub>oc</sub>	-0.200%/°C
Temperature Coefficient of P <sub>max</sub>	-0.260%/°C